

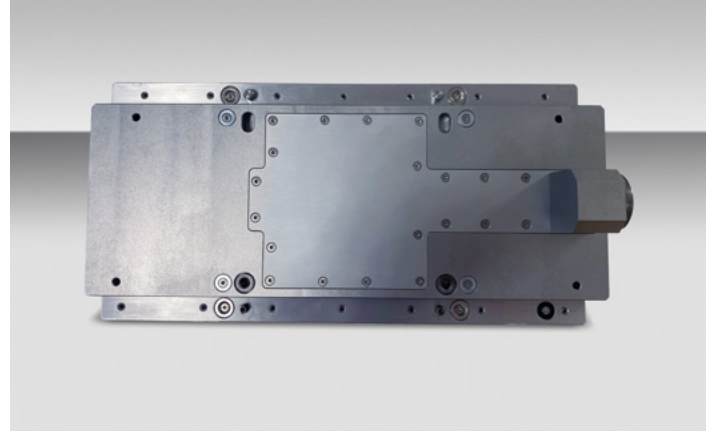
NEW: ASM Flex Support Solution

A support solution that quickly pays off. Our modular support solution delivers maximum flexibility and the fastest setup changeovers.



ASM Flex Support is the innovative support solution that gives you maximum flexibility. The secret is its modular design. The ASM Flex Support Base Tower System gets adapted to the respective printer platform, including printers from manufacturers other than DEK. The system stays in the printer and keeps it open to all applications you want to support.

The second component are the ASM Flex Support plates we manufacture on demand for your specific application. The advantage: You can mount each plate flexibly and quickly – without any tools – on any printer equipped with the ASM Flex Support base tower system and start printing with minimal setup time. Even your warehouse will be happy because only the support plates must be stored and made available.



ASM Flex Support Base Tower System

This component is adapted to the respective printing platform and remains in the printer. That way, the printer is always ready to support a wide range of applications.

Functions and benefits:

- Easily adjustable in size (80 to 300 mm)
- Stays in the printer, i.e. one system for all applications
- Available for DEK Horizon, DEK NeoHorizon, and DEK TQ
- Also available for printing platforms from other manufacturers
- Play-and-play fastening without screws

ASM Flex Support Plates

Support plates suitable for the ASM Support Flex Base Tower Systems – optionally manufactured for specific applications. Plates can be installed quickly without tools.

Functions and benefits:

- Four models:
 - 1st/2nd pass (support for unpopulated or previously populated PCBs)
 - With or without vacuum
- Anodized surfaces for easy cleaning
- Low weight for easy handling and storage
- Delivery
 - Fast availability (within 5 business days)
 - Measurement protocol for each support plate
 - Application-specific support plates as per the customer's specifications

FEATURES SPECIFICATIONS	
Material Spec	EN AW7075
Surface	Hard Anodised
Tower Height	58.7 mm +0/-0.02 mm
Tool plate Thickness	22.3 mm +0/- 0.02 mm
PCB Bottom Ref. Height	81 mm
Applicable PCB Size min (L/W)	100 mm/100 mm
Applicable PCB Size max (L/W)	550 mm/450 mm
Applicable PCB thickness	0.8 mm to 10 mm
Vacuum Option	Yes
Weight tower	2.3 kg

ASM FLEX SUPPORT PLATE OVERVIEW	
Part number	Description
SAP	
03176914-01	1st Pass Plate (22.3 mm)
03176916-01	1st Pass Vacuum Plate (22.3 mm)
03176915-01	2nd Pass Plate (22.3 mm)
03176917-01	2nd Pass Vacuum Plate (22.3 mm)

ASM FLEX SUPPORT PLATE COMPATIBILITY							
	DEK Micron Series	DEK TQ Series	EKRA (Serio/X5)	YAMAHA	MPM (Edison)	MPM (Accela/Momentum)	Panasonic (SPG/Sp series)
1st Standard non-vac 22.3 mm	✓	✓	✓	✓	✓	-	-
2nd Standard non-vac 22.3 mm	✓	✓	✓	✓	✓	-	-
1st Vacuum 22.3 mm	✓	-	✓	✓	✓	-	-
2nd Vacuum 22.3 mm	✓	-	✓	✓	✓	-	-



ASM Process Support
Products Website

www.asm-bsp.com



ASM Process Support
Products Webshop

[www.asm-smt.com/de/
myasm/webshop](http://www.asm-smt.com/de/myasm/webshop)



ASM
Website

www.asm-smt.com



ASM
YouTube

[www.youtube.com/c/
ASMSMTSolutions](http://www.youtube.com/c/ASMSMTSolutions)

Americas:

ASM Assembly Systems USA Inc.
Phone: +888 768 4357 (press 2)
E-mail: smtparts.us@asmpt.com

Europe:

ASM Assembly Systems
Phone: +40 722 692 108
E-mail: asm-bsp.eu@asmpt.com

Asia:

ASM Assembly Systems
Phone: +65 6877 3900
E-mail: spares.sg@asmpt.com

www.asm-bsp.com | www.asm-smt.com